

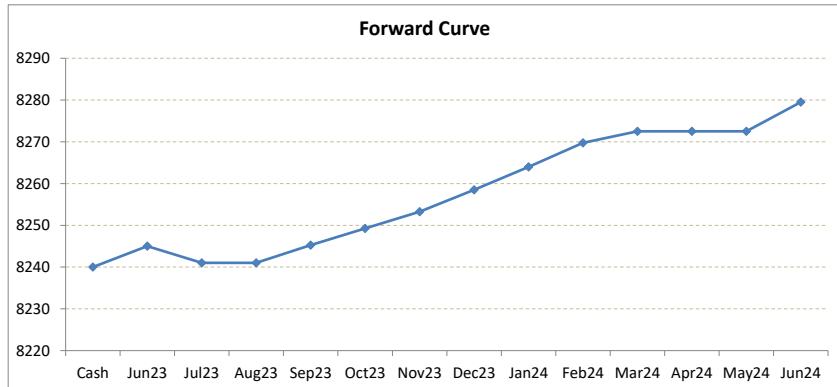
LME Valuation - Copper

Cash - 3M: 3.50c

Date: 2023-06-01

Cash 8240.00
3M 8243.50
 Jun23 8245.00
 Jul23 8241.00
 Aug23 8241.00
 Sep23 8245.25
 Oct23 8249.25
 Nov23 8253.25
 Dec23 8258.50
 Jan24 8264.00
 Feb24 8269.75
 Mar24 8272.50
 Apr24 8272.50
 May24 8272.50
 Jun24 8279.50

	Cash-Jun23	Cash-Jul23	Cash-Aug23	Cash-Sep23	Cash-Oct23	Cash-Nov23	Cash-Dec23	Cash-Jan24	Cash-Feb24	Cash-Mar24	Cash-Apr24	Cash-May24
Cash	5.00c	1.00c	1.00c	5.25c	9.25c	13.25c	18.50c	24.00c	29.75c	32.50c	32.50c	32.50c
	Jun23-3M	Jul23-3M	Aug23-3M	3M-Sep23	3M-Oct23	3M-Nov23	3M-Dec23	3M-Jan24	3M-Feb24	3M-Mar24	3M-Apr24	3M-May24
3M	1.50b	2.50c	2.50c	1.75c	5.75c	9.75c	15.00c	20.50c	26.25c	29.00c	29.00c	29.00c
	Jun23-Jul23	Jul23-Aug23	Aug23-Sep23	Sep23-Oct23	Oct23-Nov23	Nov23-Dec23	Dec23-Jan24	Jan24-Feb24	Feb24-Mar24	Mar24-Apr24	Apr24-May24	May24-Jun24
3rd wed	4.00b	0.00b	4.25c	4.00c	4.00c	5.25c	5.50c	5.75c	2.75c	0.00b	0.00b	7.00c
	Jul23	Aug23	Sep23	Oct23	Nov23	Dec23	Jan24	Feb24	Mar24	Apr24	May24	Jun24
Jun23	4.00b	4.00b	0.25c	4.25c	8.25c	13.50c	19.00c	24.75c	27.50c	27.50c	27.50c	34.50c
Jul23		0.00b	4.25c	8.25c	12.25c	17.50c	23.00c	28.75c	31.50c	31.50c	31.50c	38.50c
Aug23			4.25c	8.25c	12.25c	17.50c	23.00c	28.75c	31.50c	31.50c	31.50c	38.50c
Sep23				4.00c	8.00c	13.25c	18.75c	24.50c	27.25c	27.25c	27.25c	34.25c
Oct23					4.00c	9.25c	14.75c	20.50c	23.25c	23.25c	23.25c	30.25c
Nov23						5.25c	10.75c	16.50c	19.25c	19.25c	19.25c	26.25c
Dec23							5.50c	11.25c	14.00c	14.00c	14.00c	21.00c
Jan24								5.75c	8.50c	8.50c	8.50c	15.50c
Feb24									2.75c	2.75c	2.75c	9.75c
Mar24										0.00b	0.00b	7.00c
Apr24											0.00b	7.00c
May24												7.00c
Jun24												



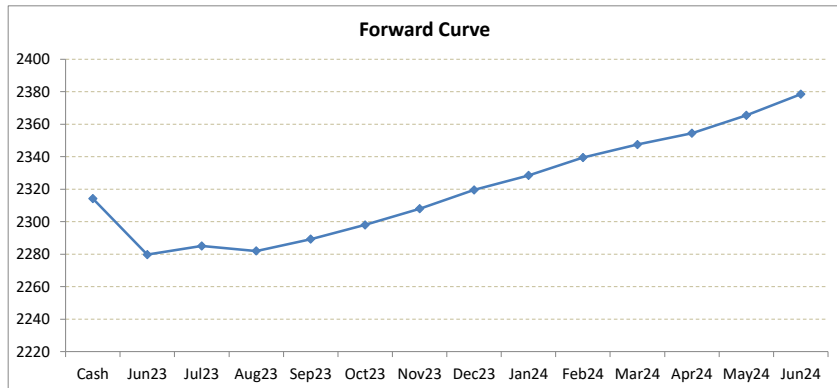
*본 자료는 LME에서 공시하는 Valuation을 토대로 작성된 것으로 실제 거래 시의 스프레드와는 무관합니다.
 ** Source: Reuters

LME Valuation - Aluminium

Cash - 3M: **31.75b**

Date: **2023-06-01**

Cash	2314.25		Cash-Jun23	Cash-Jul23	Cash-Aug23	Cash-Sep23	Cash-Oct23	Cash-Nov23	Cash-Dec23	Cash-Jan24	Cash-Feb24	Cash-Mar24	Cash-Apr24	Cash-May24
3M	2282.50	Cash	34.50b	29.25b	32.25b	25.00b	16.25b	6.25b	5.25c	14.25c	25.25c	33.25c	40.25c	51.25c
Jun23	2279.75													
Jul23	2285.00		Jun23-3M	Jul23-3M	Aug23-3M	3M-Sep23	3M-Oct23	3M-Nov23	3M-Dec23	3M-Jan24	3M-Feb24	3M-Mar24	3M-Apr24	3M-May24
Aug23	2282.00	3M	2.75c	2.50b	0.50c	6.75c	15.50c	25.50c	37.00c	46.00c	57.00c	65.00c	72.00c	83.00c
Sep23	2289.25													
Oct23	2298.00		Jun23-Jul23	Jul23-Aug23	Aug23-Sep23	Sep23-Oct23	Oct23-Nov23	Nov23-Dec23	Dec23-Jan24	Jan24-Feb24	Feb24-Mar24	Mar24-Apr24	Apr24-May24	May24-Jun24
Nov23	2308.00	3rd wed	5.25c	3.00b	7.25c	8.75c	10.00c	11.50c	9.00c	11.00c	8.00c	7.00c	11.00c	13.00c
Dec23	2319.50													
Jan24	2328.50		Jul23	Aug23	Sep23	Oct23	Nov23	Dec23	Jan24	Feb24	Mar24	Apr24	May24	Jun24
Feb24	2339.50	Jun23	5.25c	2.25c	9.50c	18.25c	28.25c	39.75c	48.75c	59.75c	67.75c	74.75c	85.75c	98.75c
Mar24	2347.50		Jul23	3.00b	4.25c	13.00c	23.00c	34.50c	43.50c	54.50c	62.50c	69.50c	80.50c	93.50c
Apr24	2354.50			Aug23	7.25c	16.00c	26.00c	37.50c	46.50c	57.50c	65.50c	72.50c	83.50c	96.50c
May24	2365.50				Sep23	8.75c	18.75c	30.25c	39.25c	50.25c	58.25c	65.25c	76.25c	89.25c
Jun24	2378.50					Oct23	10.00c	21.50c	30.50c	41.50c	49.50c	56.50c	67.50c	80.50c
							Nov23	11.50c	20.50c	31.50c	39.50c	46.50c	57.50c	70.50c
								Dec23	9.00c	20.00c	28.00c	35.00c	46.00c	59.00c
									Jan24	11.00c	19.00c	26.00c	37.00c	50.00c
										Feb24	8.00c	15.00c	26.00c	39.00c
											Mar24	7.00c	18.00c	31.00c
												Apr24	11.00c	24.00c
													May24	13.00c
														Jun24



*본 자료는 LME에서 공시하는 Valuation을 토대로 작성된 것으로 실제 거래 시의 스프레드와는 무관합니다.

** Source: Reuters

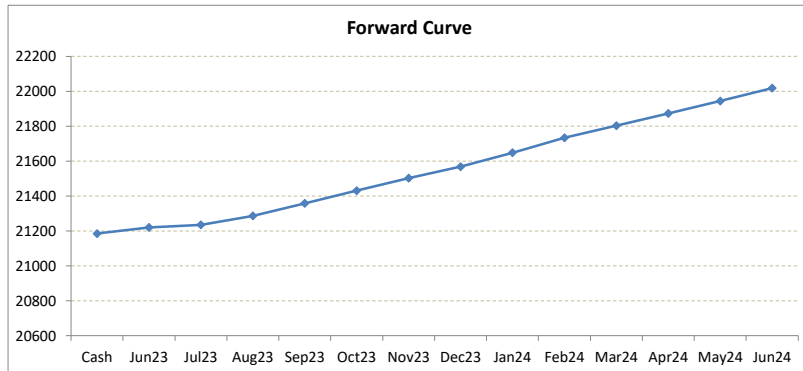
LME Valuation - Nickel

Cash - 3M: 133.00c

Date: 2023-06-01

Cash 21185.00
3M 21318.00
 Jun23 **21220.00**
 Jul23 **21235.00**
 Aug23 **21286.00**
 Sep23 **21358.00**
 Oct23 **21431.00**
 Nov23 **21502.00**
 Dec23 **21568.00**
 Jan24 **21648.00**
 Feb24 **21733.00**
 Mar24 **21803.00**
 Apr24 **21873.00**
 May24 **21944.00**
 Jun24 **22018.00**

	Cash-Jun23	Cash-Jul23	Cash-Aug23	Cash-Sep23	Cash-Oct23	Cash-Nov23	Cash-Dec23	Cash-Jan24	Cash-Feb24	Cash-Mar24	Cash-Apr24	Cash-May24
Cash	35.00c	50.00c	101.00c	173.00c	246.00c	317.00c	383.00c	463.00c	548.00c	618.00c	688.00c	759.00c
	Jun23-3M	Jul23-3M	Aug23-3M	3M-Sep23	3M-Oct23	3M-Nov23	3M-Dec23	3M-Jan24	3M-Feb24	3M-Mar24	3M-Apr24	3M-May24
3M	98.00c	83.00c	32.00c	40.00c	113.00c	184.00c	250.00c	330.00c	415.00c	485.00c	555.00c	626.00c
	Jun23-Jul23	Jul23-Aug23	Aug23-Sep23	Sep23-Oct23	Oct23-Nov23	Nov23-Dec23	Dec23-Jan24	Jan24-Feb24	Feb24-Mar24	Mar24-Apr24	Apr24-May24	May24-Jun24
3rd wed	15.00c	51.00c	72.00c	73.00c	71.00c	66.00c	80.00c	85.00c	70.00c	70.00c	71.00c	74.00c
	Jul23	Aug23	Sep23	Oct23	Nov23	Dec23	Jan24	Feb24	Mar24	Apr24	May24	Jun24
Jun23	15.00c	66.00c	138.00c	211.00c	282.00c	348.00c	428.00c	513.00c	583.00c	653.00c	724.00c	798.00c
Mar24	Jul23	51.00c	123.00c	196.00c	267.00c	333.00c	413.00c	498.00c	568.00c	638.00c	709.00c	783.00c
Apr24	Aug23	72.00c	145.00c	216.00c	282.00c	362.00c	447.00c	517.00c	587.00c	658.00c	732.00c	
May24	Sep23	73.00c	144.00c	210.00c	290.00c	375.00c	445.00c	515.00c	586.00c	660.00c		
Jun24	Oct23	71.00c	137.00c	217.00c	302.00c	372.00c	442.00c	513.00c	587.00c			
	Nov23	66.00c	146.00c	231.00c	301.00c	371.00c	442.00c	516.00c				
	Dec23	80.00c	165.00c	235.00c	305.00c	376.00c	450.00c					
	Jan24	85.00c	155.00c	225.00c	296.00c	370.00c						
	Feb24	70.00c	140.00c	211.00c	285.00c							
	Mar24	70.00c	141.00c	215.00c								
	Apr24	71.00c	145.00c									
	May24	74.00c										
	Jun24											



*본 자료는 LME에서 공시하는 Valuation을 토대로 작성된 것으로 실제 거래 시의 스프레드와는 무관합니다.

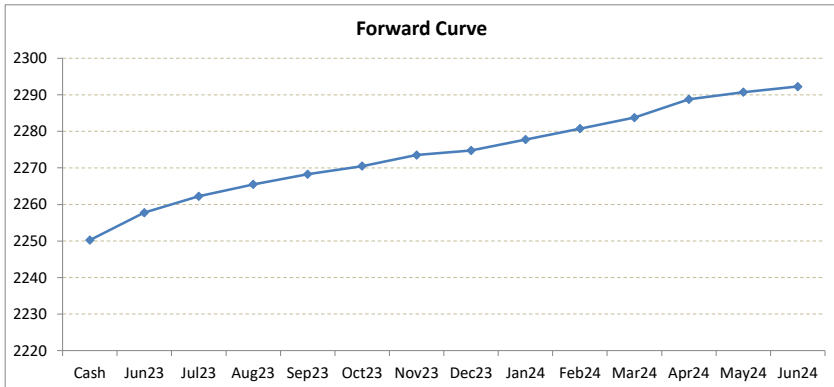
** Source: Reuters

LME Valuation - Zinc

Cash - 3M: 16.75c

Date: 2023-06-01

	Cash	Cash-Jun23	Cash-Jul23	Cash-Aug23	Cash-Sep23	Cash-Oct23	Cash-Nov23	Cash-Dec23	Cash-Jan24	Cash-Feb24	Cash-Mar24	Cash-Apr24	Cash-May24
Cash	2250.25												
3M	2267.00	7.50c	12.00c	15.25c	18.00c	20.25c	23.25c	24.50c	27.50c	30.50c	33.50c	38.50c	40.50c
Jun23	2257.75												
Jul23	2262.25	Jun23-3M	Jul23-3M	Aug23-3M	3M-Sep23	3M-Oct23	3M-Nov23	3M-Dec23	3M-Jan24	3M-Feb24	3M-Mar24	3M-Apr24	3M-May24
Aug23	2265.50	9.25c	4.75c	1.50c	1.25c	3.50c	6.50c	7.75c	10.75c	13.75c	16.75c	21.75c	23.75c
Sep23	2268.25												
Oct23	2270.50	Jun23-Jul23	Jul23-Aug23	Aug23-Sep23	Sep23-Oct23	Oct23-Nov23	Nov23-Dec23	Dec23-Jan24	Jan24-Feb24	Feb24-Mar24	Mar24-Apr24	Apr24-May24	May24-Jun24
Nov23	2273.50	4.50c	3.25c	2.75c	2.25c	3.00c	1.25c	3.00c	3.00c	3.00c	5.00c	2.00c	1.50c
Dec23	2274.75												
Jan24	2277.75	Jul23	Aug23	Sep23	Oct23	Nov23	Dec23	Jan24	Feb24	Mar24	Apr24	May24	Jun24
Feb24	2280.75	4.50c	7.75c	10.50c	12.75c	15.75c	17.00c	20.00c	23.00c	26.00c	31.00c	33.00c	34.50c
Mar24	2283.75	Jul23	3.25c	6.00c	8.25c	11.25c	12.50c	15.50c	18.50c	21.50c	26.50c	28.50c	30.00c
Apr24	2288.75		Aug23	2.75c	5.00c	8.00c	9.25c	12.25c	15.25c	18.25c	23.25c	25.25c	26.75c
May24	2290.75			Sep23	2.25c	5.25c	6.50c	9.50c	12.50c	15.50c	20.50c	22.50c	24.00c
Jun24	2292.25				Oct23	3.00c	4.25c	7.25c	10.25c	13.25c	18.25c	20.25c	21.75c
						Nov23	1.25c	4.25c	7.25c	10.25c	15.25c	17.25c	18.75c
							Dec23	3.00c	6.00c	9.00c	14.00c	16.00c	17.50c
								Jan24	3.00c	6.00c	11.00c	13.00c	14.50c
									Feb24	3.00c	8.00c	10.00c	11.50c
										Mar24	5.00c	7.00c	8.50c
											Apr24	2.00c	3.50c
												May24	1.50c
													Jun24



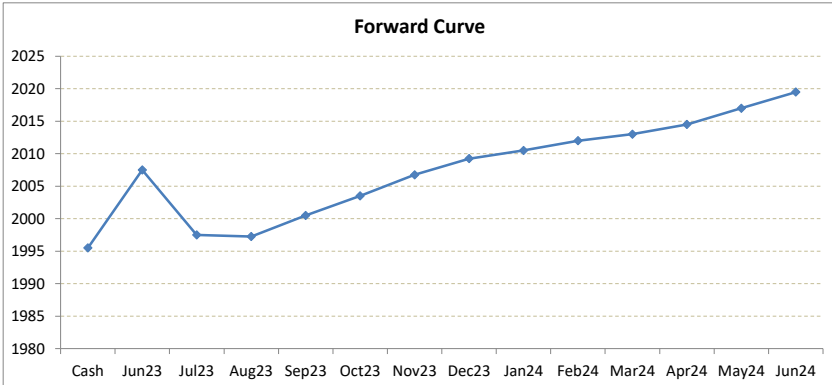
*본 자료는 LME에서 공시하는 Valuation을 토대로 작성된 것으로 실제 거래 시의 스프레드와는 무관합니다.
 ** Source: Reuters

LME Valuation - Lead

Cash - 3M: 3.50c

Date: 2023-06-01

Cash	1995.50	Cash-Jun23	Cash-Jul23	Cash-Aug23	Cash-Sep23	Cash-Oct23	Cash-Nov23	Cash-Dec23	Cash-Jan24	Cash-Feb24	Cash-Mar24	Cash-Apr24	Cash-May24
3M	1999.00	12.00c	2.00c	1.75c	5.00c	8.00c	11.25c	13.75c	15.00c	16.50c	17.50c	19.00c	21.50c
Jun23	2007.50												
Jul23	1997.50	Jun23-3M	Jul23-3M	Aug23-3M	3M-Sep23	3M-Oct23	3M-Nov23	3M-Dec23	3M-Jan24	3M-Feb24	3M-Mar24	3M-Apr24	3M-May24
Aug23	1997.25	8.50b	1.50c	1.75c	1.50c	4.50c	7.75c	10.25c	11.50c	13.00c	14.00c	15.50c	18.00c
Sep23	2000.50												
Oct23	2003.50	Jun23-Jul23	Jul23-Aug23	Aug23-Sep23	Sep23-Oct23	Oct23-Nov23	Nov23-Dec23	Dec23-Jan24	Jan24-Feb24	Feb24-Mar24	Mar24-Apr24	Apr24-May24	May24-Jun24
Nov23	2006.75	10.00b	0.25b	3.25c	3.00c	3.25c	2.50c	1.25c	1.50c	1.00c	1.50c	2.50c	2.50c
Dec23	2009.25												
Jan24	2010.50	Jul23	Aug23	Sep23	Oct23	Nov23	Dec23	Jan24	Feb24	Mar24	Apr24	May24	Jun24
Feb24	2012.00	10.00b	10.25b	7.00b	4.00b	0.75b	1.75c	3.00c	4.50c	5.50c	7.00c	9.50c	12.00c
Mar24	2013.00	Jul23	0.25b	3.00c	6.00c	9.25c	11.75c	13.00c	14.50c	15.50c	17.00c	19.50c	22.00c
Apr24	2014.50		Aug23	3.25c	6.25c	9.50c	12.00c	13.25c	14.75c	15.75c	17.25c	19.75c	22.25c
May24	2017.00			Sep23	3.00c	6.25c	8.75c	10.00c	11.50c	12.50c	14.00c	16.50c	19.00c
Jun24	2019.50				Oct23	3.25c	5.75c	7.00c	8.50c	9.50c	11.00c	13.50c	16.00c
						Nov23	2.50c	3.75c	5.25c	6.25c	7.75c	10.25c	12.75c
							Dec23	1.25c	2.75c	3.75c	5.25c	7.75c	10.25c
								Jan24	1.50c	2.50c	4.00c	6.50c	9.00c
									Feb24	1.00c	2.50c	5.00c	7.50c
										Mar24	1.50c	4.00c	6.50c
											Apr24	2.50c	5.00c
												May24	2.50c
													Jun24



*본 자료는 LME에서 공시하는 Valuation을 토대로 작성된 것으로 실제 거래 시의 스프레드와는 무관합니다.
 ** Source: Reuters

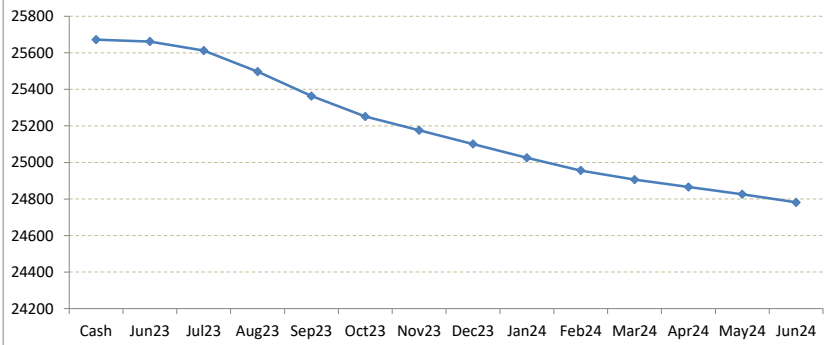
LME Valuation - Tin

Cash - 3M: **235.00b**

Date: **2023-06-01**

	Cash-Jun23	Cash-Jul23	Cash-Aug23	Cash-Sep23	Cash-Oct23	Cash-Nov23	Cash-Dec23	Cash-Jan24	Cash-Feb24	Cash-Mar24	Cash-Apr24	Cash-May24
Cash	25672.00											
3M	25437.00											
Jun23	25662.00											
Jul23	25612.00											
Aug23	25497.00											
Sep23	25363.00											
Oct23	25251.00											
Nov23	25176.00											
Dec23	25101.00											
Jan24	25026.00											
Feb24	24956.00											
Mar24	24906.00											
Apr24	24866.00											
May24	24826.00											
Jun24	24781.00											
Cash	10.00b	60.00b	175.00b	309.00b	421.00b	496.00b	571.00b	646.00b	716.00b	766.00b	806.00b	846.00b
3M	225.00b	175.00b	60.00b	74.00b	186.00b	261.00b	336.00b	411.00b	481.00b	531.00b	571.00b	611.00b
3rd wed	50.00b	115.00b	134.00b	112.00b	75.00b	75.00b	75.00b	70.00b	50.00b	40.00b	40.00b	45.00b
Jun23	50.00b	165.00b	299.00b	411.00b	486.00b	561.00b	636.00b	706.00b	756.00b	796.00b	836.00b	881.00b
Jul23	115.00b	249.00b	361.00b	436.00b	511.00b	586.00b	656.00b	706.00b	746.00b	786.00b	831.00b	
Aug23	134.00b	246.00b	321.00b	396.00b	471.00b	541.00b	591.00b	631.00b	671.00b	716.00b		
Sep23	112.00b	187.00b	262.00b	337.00b	407.00b	457.00b	497.00b	537.00b	582.00b			
Oct23	75.00b	150.00b	225.00b	295.00b	345.00b	385.00b	425.00b	470.00b				
Nov23	75.00b	150.00b	220.00b	270.00b	310.00b	350.00b	395.00b					
Dec23	75.00b	145.00b	195.00b	235.00b	275.00b	320.00b						
Jan24	70.00b	120.00b	160.00b	200.00b	245.00b							
Feb24	50.00b	90.00b	130.00b	175.00b								
Mar24	40.00b	80.00b	125.00b									
Apr24	40.00b	85.00b										
May24	45.00b											
Jun24												

Forward Curve



*본 자료는 LME에서 공시하는 Valuation을 토대로 작성된 것으로 실제 거래 시의 스프레드와는 무관합니다.

** Source: Reuters